



May 2023

Securing the mobile workforce with Mobile Threat Defence



STARHUB ENTERPRISE

PROTECT YOUR MOBILE-EMPOWERED WORKFORCE

With businesses moving most of their capability to a mobile platform for employees, most mobile users are unaware of the inherent information security and privacy risks it poses. Whether it is a BYOD or corporate-owned mobile device, the risk to corporate data is a concern to most security professionals.

Accounting for over 35% of the active zero-day vulnerabilities discovered in 2021, mobile endpoints are increasingly the path of least resistance for many attackers. 50% of IT and security professionals report that it is "likely to certain" that their enterprise has already had a security incident due to inadequate mobile device security. Compromised apps, unsecured third-party app stores, phishing attacks, man in the middle (MITM), and rogue/malicious networks are proven attack vectors of these heavily relied upon mobile endpoints.

"In 2021, more than 2 million unique mobile malware was discovered."

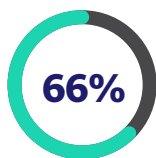
– 2022 Zimperium Global Threat Report, 2022

To achieve secured mobility, enterprises need advanced mobile security and threat defence to safeguard their workforce and critical business data, as well as to meet compliance standards.

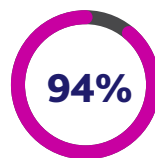
Need for protection due to heightened cybersecurity risk on mobile devices



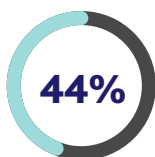
year-over-year increase in **phishing attempts** on mobile devices



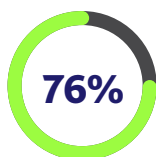
of mobile phones connected to **enterprises** are unmanaged



of malware is delivered by **email**



of enterprises had a **compromised device** connected to their network



of enterprises expect **data breach** in 2022

Source: Techwire Asia

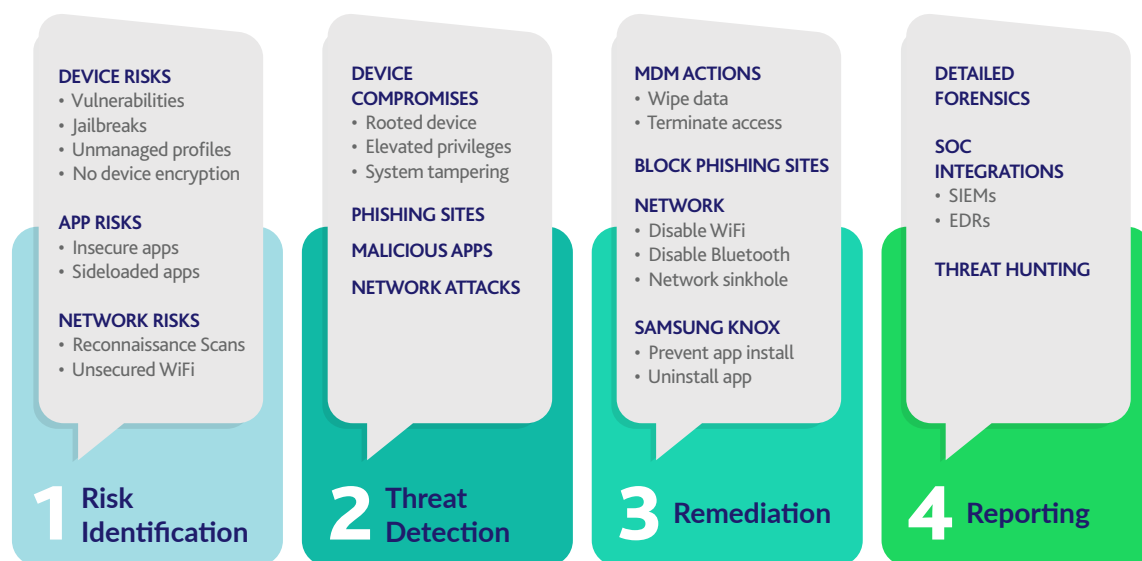
ADVANCED MOBILE SECURITY WITH STARHUB MOBILE THREAT DEFENCE



Powered by Zimperium, StarHub Mobile Threat Defence (MTD) provides a comprehensive mobile security for both corporate-owned and BYOD devices. It delivers persistent protection through monitoring and analytics to prevent, detect, and remediate sophisticated cyber-attacks in real time, such as advanced phishing attacks, on devices, networks, and applications. It protects against more than 40 known attack vectors, including detection and mitigation of new ones that haven't yet been discovered.

Through on-device, machine learning-powered detection, StarHub MTD uses billions of data points to understand mobile risks and threats, training the threat model and keeping mobile endpoints secure against both known and unknown threats. When a threat is detected, end-users receive contextual alerts and recommendations to help remediate the situation.

How MTD works



Key Features



POWERED BY MACHINE LEARNING

On-device, machine learning-based detection provides prevention against the latest mobile threats, including zero-day malware.



CRITICAL DATA, WHERE YOU NEED IT

With integrations into enterprise SIEM, IAM, UEM, and XDR platforms, administrators will always have the data they need.



DEPLOYABLE ANYWHERE

Address local data laws and compliance needs by deploying to any cloud, on-premise, or air-gapped environments.



ZERO-TOUCH END USER DEPLOYMENT

MTD can be deployed to your enterprise's mobile endpoints without the need for complicated activation by the end-users.



SUPPORT ZERO TRUST WITH CRITICAL DATA

Comprehensive device attribution enables enterprises to have a complete picture of their mobile endpoint security and shores up Zero Trust architectures.



COMPLETE MOBILE COVERAGE

No matter the mobile device, from tablets to phones, StarHub MTD provides complete security coverage across Android and iOS.



Enhance your enterprise security and protection with StarHub's comprehensive portfolio of managed security solutions:



ON-DEVICE

Real-time detection & protection against both known & unknown threats



COMPREHENSIVE

Protect devices against advanced phishing, device, network, & application cyber-attacks in real-time



BUILT WITH PRIVACY FIRST

Efficiently monitor and mitigate advanced mobile threats while respecting the unique policy & privacy requirements of the organisation



CONSOLIDATED END-POINT CONSOLE

Dashboards allow InfoSec teams to focus on critical areas and establish automated actions within the platform to respond and remediate issues efficiently



ENTERPRISE-READY/ SCALABLE

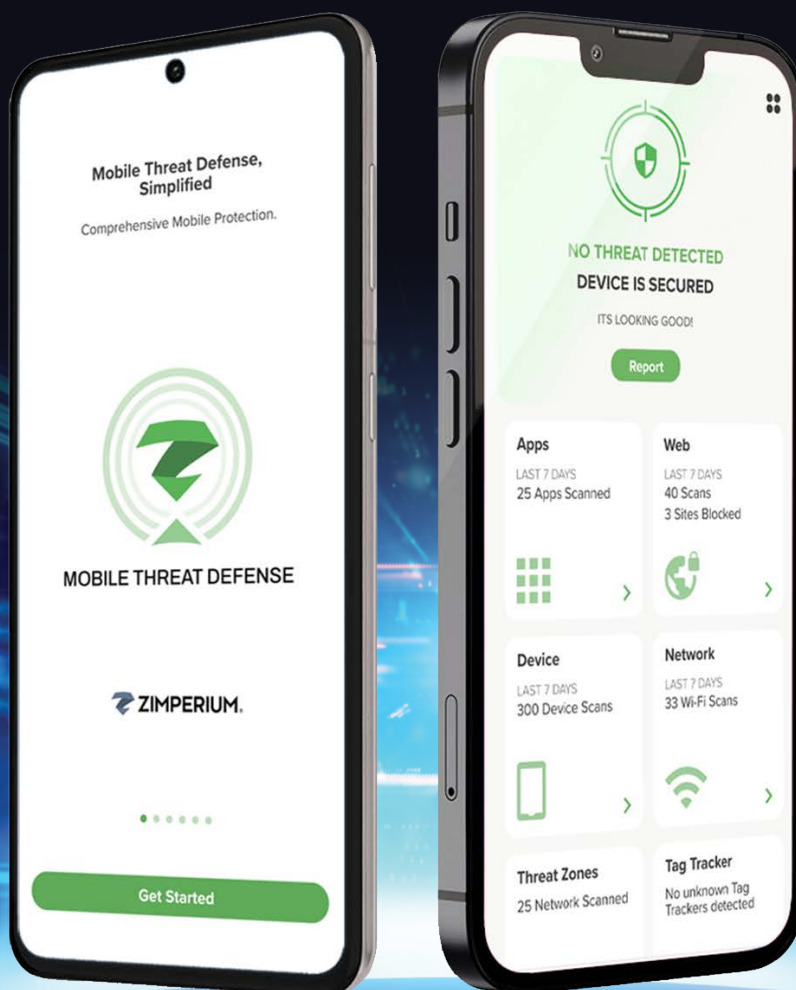
Seamless integration with enterprise security ecosystem

Zimperium MTD

CLOUD-BASED MACHINE LEARNING ENGINE

z9 is a patented detection engine designed for mobile and provides real-time, on-device protection.

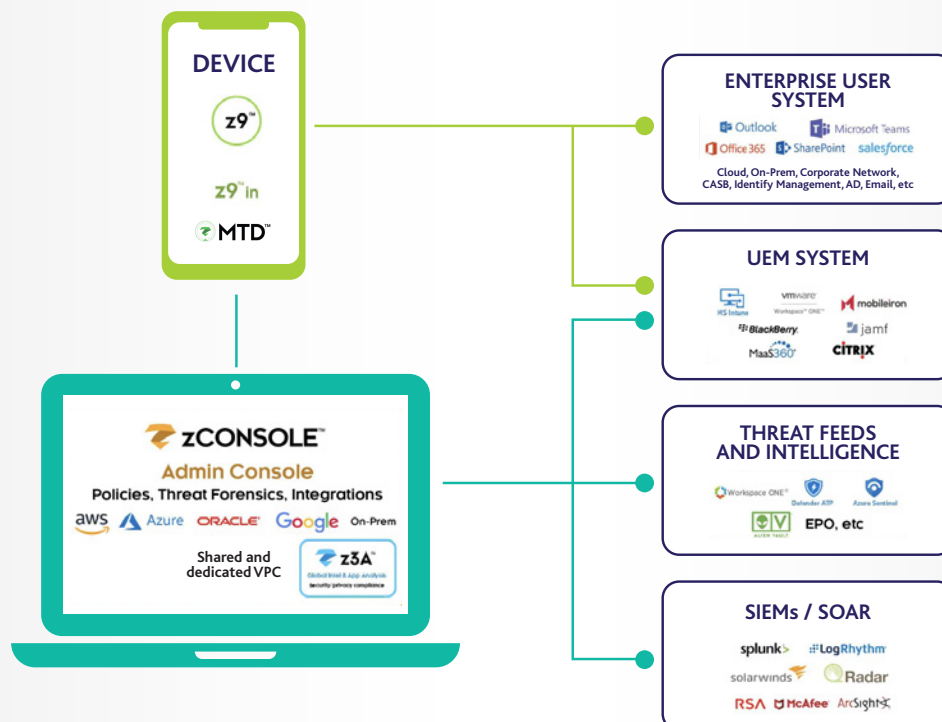
Leveraging advanced machine learning capabilities, **Zimperium MTD** detects threats across the kill chain: device, network, phishing, and app attacks. It analyses slight deviations to a mobile device's system parameters to detect both known and unknown threats protecting the device against all primary attack vectors, even when the device is not connected to network.



zCONSOLE

ENTERPRISE-READY SAAS MOBILE SECURITY

zConsole is an advanced cloud-native management console that enables administrators to manage policies, monitor for threats, and mitigate mobile risks. It can be deployed on any cloud (AWS, Azure, Oracle, or Google), shared and dedicated SaaS, air-gapped network, or on-premise networks. Zimperium MTD is managed on zConsole.



StarHub Mobile Threat Defence powered by:



THE STARHUB ADVANTAGE



Suite of Managed Mobility Services

One single provider offering end-to-end managed mobility solutions - from 5G mobile plans to device lifecycle management and mobile security solutions



Ease of Deployment and Support

Deployed through our professional support services as Managed Mobility services with 24/7 enablement and support, or through direct subscription

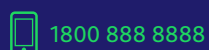


Peace of Mind

Offers Managed Services, serving as an extension of your internal cybersecurity resource to provide consultancy, implementation, monitoring, management, and relevant reporting

Enhance your enterprise security and protection with StarHub's comprehensive portfolio of managed security solutions. Built with **advanced threat security** in mind, StarHub MTD meets the mobile security needs of enterprises and governments around the world.

To learn more about how StarHub MTD can future-proof your digital workplace with advanced mobile security, visit starhub.com/mtd



1800 888 8888



business@starhub.com

All information stated is correct at time of printing and subject to change without notice.